



Android Phone/Tablet

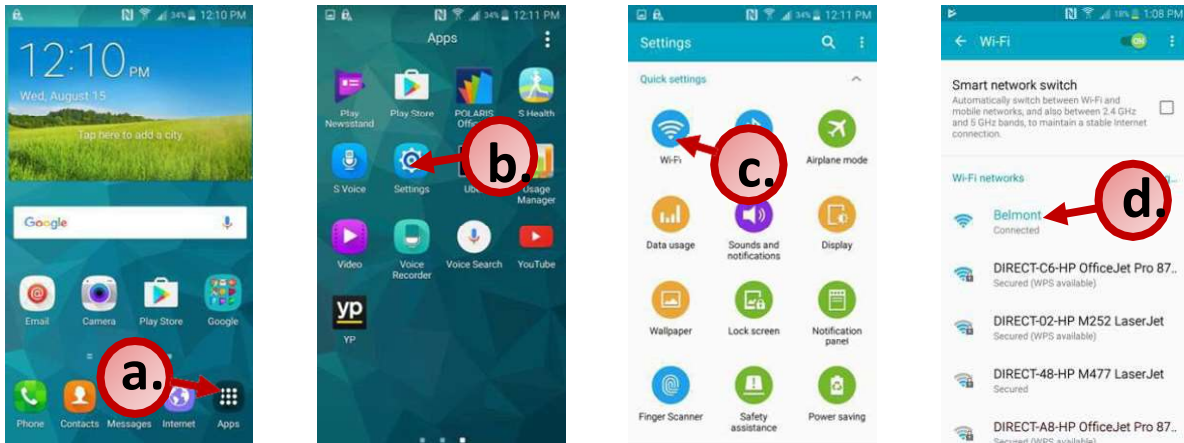
1. Connect to the Belmont Wi-Fi network.
2. Install and Configure the Mobility Print App.
3. Print from a document or app.
4. Enter BruinPrint login credentials.
5. Pick up printing.



BruinPrint requires a connection to a Belmont wireless network.

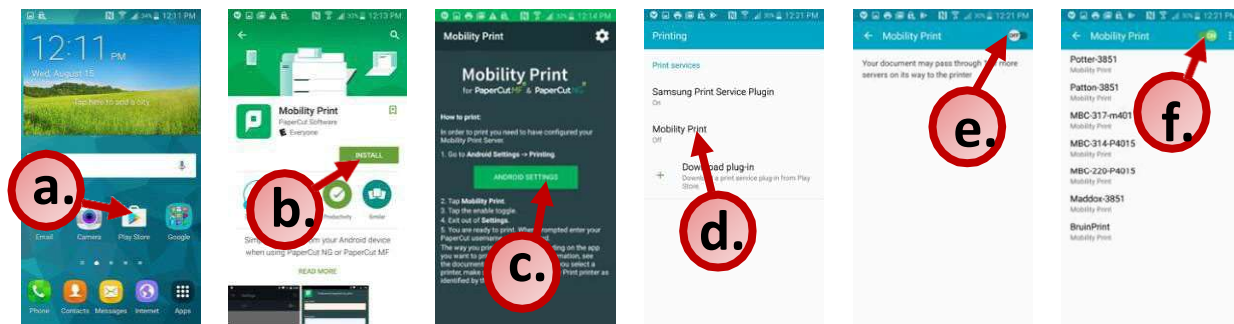
1. Connect to a Belmont Wi-Fi Network.

- On the Home screen, tap **Apps**.
- Find and tap the **Settings** app.
- Tap the **Wi-Fi** icon.
- Make sure **Belmont** or **RESNET** is selected and connected.



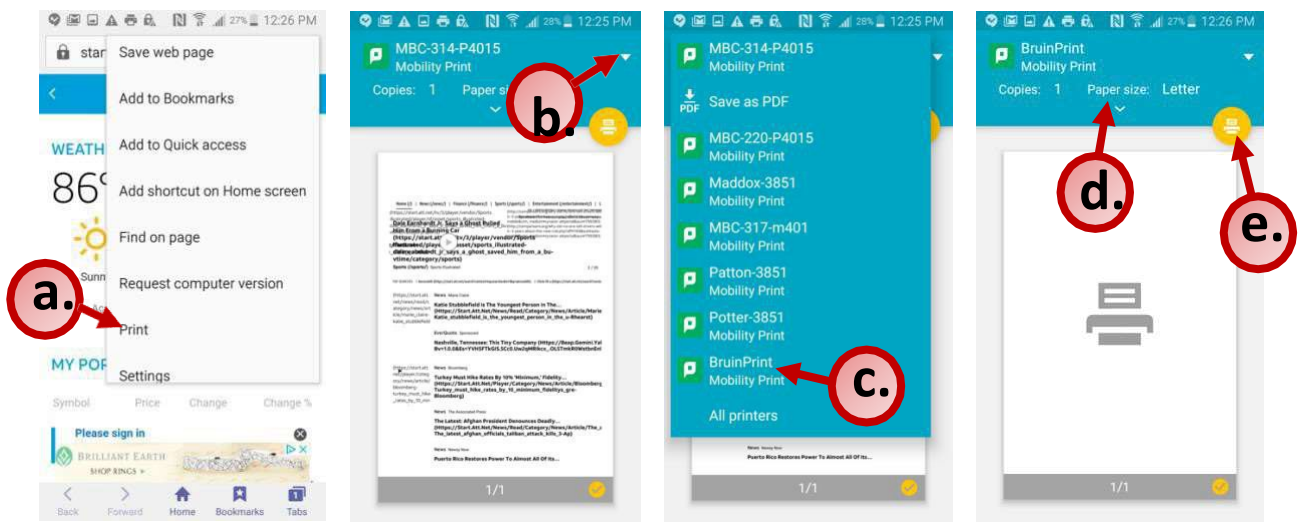
2. Install and Configure the Mobility Print App.

- Tap the **Play Store** app. Search for and find **Mobility Print** app.
- Tap the **Install** button. After installation, open the app.
- Tap the **Android Settings** button.
- Tap **Mobility Print**.
- Tap the On/Off toggle to **ON**.
- Once Mobility Print is turned ON, exit out of the app settings.



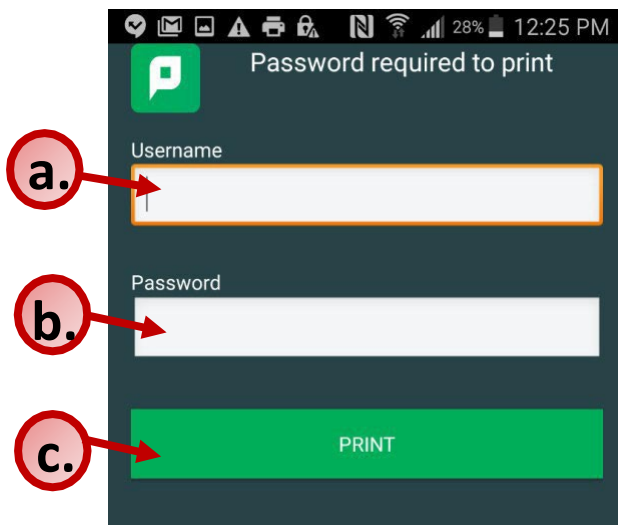
3. Print from a document or app.

- a. Within a document or app, find and tap the Print option.
- b. Tap the drop-down arrow located at the top-right corner of the screen.
- c. Find and tap **BruinPrint**.
- d. Adjust advanced printing options (e.g., two-sided, color)
 - i. **Please be aware of your default settings – some devices are defaulted to COLOR PRINT.**
 - ii. **Do not use the A3 or A4 paper sizes. Use Letter instead.**
- e. Tap the yellow printer icon.



4. Enter BruinPrint login credentials.

- a. Type your BruinPrint username (i.e., Belmont email address).
- b. Type your BruinPrint password (i.e., Belmont email password).
- c. Tap the **Print** button.



5. Pick up printing.

- a. Walk to a BruinPrint station.
- b. Tap your BUID card or mobile wallet on the card reader.
- c. Click on Print Release.
- d. The display screen will list current printings.
- e. Tap the document you want to print.
- f. Tap the **Print** button on the bottom-right corner of the display screen.
- g. Once the document is printed, tap the **Log Out** button at the top-right corner of the displayscreen.

