

BELMONT COMMONS

Belmont Commons is a townhouse complex with 30 4-bedroom, 2 1/2 bath units. Any student with 30 credit hours or 2 completed semesters of college is eligible to live in the Commons. It has a unique feel because of its location three blocks off the main campus on Belmont Blvd. It is also a gated community with access through driving and pedestrian gates. There are two designs for the apartments. One design has two bedrooms downstairs joined by a bathroom and two bedrooms upstairs also joined by a bathroom. The second design has all four bedrooms upstairs joined together by 2 shared bathrooms.



Kitchen/Dining Room

- Average Size—13'x17'
- Full size refrigerator
- Double sink
- Full size range
- Linoleum
- Round dining table

Bedroom

- Average Size—8'x10'
- Twin bed with extra long mattress
- Four drawer dresser
- Closet
- Night stand
- Internet, cable, phone hook-up
- Built in desk with chair

Living Room

- Average Size—14'x10'
- Couch and arm chair
- Coffee table
- TV stand
- Cable hook-up

The Commons Clubhouse houses six washers and six dryers for convenient laundry access. Telephones are not provided in the apartment but are highly recommended because that is the best way for professors/administrators to contact a resident. All utilities, cable service, internet service, local phone, and voicemail are included in the cost for Belmont Commons. However, each student is responsible for paying his/her personal long distance phone service. Students who live in Belmont Commons are not required to purchase a meal plan, but have the option to do so.

Staff

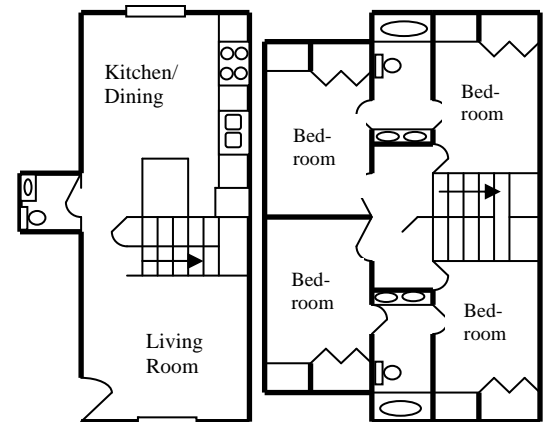
Belmont Commons residents are supported by 5 residents who live in apartments throughout the complex. Each RA has gone through extensive training in order to be a resource to our residents. RA's create social and educational opportunities in the complex through programming and community building efforts.

The RA's are supervised by a full-time, live-in professional staff member, known as the Residence Director. The RD is trained in crisis management, acts as a resource to the residents of the complex, and oversees the administrative aspects of the complex such as maintenance and discipline. The RD maintains regular hours in the Clubhouse.

The front desk in the clubhouse is open from 10am – 10pm each day to assist with any resident needs. The clubhouse is also available for band rehearsals or other functions at the discretion of the RD.

Mail

Mail is delivered to the Commons and put up each day by the Residence Life Staff. The mailing address is:
[Apartment Number] Delmar Ave.
Nashville, TN 37212



Belmont Commons Layout (Not drawn to scale)



Bedroom (View 1)



Bedroom (View 2)



Living Room



Dining Room



Kitchen

Upper-class Students Only