

June 4, 2009

Dear Instrumental Student,

We hope that you are enjoying the summer break! As we prepare for another wonderful season of performances at Belmont, we want to make you aware of audition procedures for instrumental ensembles for the upcoming year. Auditioning is an important part of the educational process for each student, and we expect that you will prepare the materials to the best of your ability. Ensemble placement and seating will largely be determined by the audition.

**Auditions for Wind Ensemble and Symphony Orchestra will take place on Tuesday, August 25, 2009 in the Sanctuary of Belmont Heights Baptist Church.** All woodwind, brass, and percussion students receiving a scholarship must audition for placement; however, students from all majors are eligible to audition. Students must be willing to perform in one or both ensembles as assigned. Following the auditions, some schedule changes may be necessary. Auditions will be heard during the following times:

11:00	AM	Saxophone
12:00	PM	<i>Break</i>
12:30	PM	Flute
1:15	PM	Oboe
1:45	PM	Bassoon
2:15	PM	Clarinet and Bass Clarinet
3:00	PM	Trumpet
4:00	PM	Trombone
4:30	PM	Euphonium/Tuba
5:00	PM	Horn
5:45	PM	<i>Break</i>
6:30	PM	Percussion

Each audition will be heard by Dr. Gregg, Dr. Kraus, and applied faculty as available. Auditions will be approximately five minutes in length. A sign-up sheet will be posted on the ensemble bulletin board in the main hallway outside the Belmont Heights Sanctuary on Monday, August 24. Please sign up for one of the five-minute slots within the allotted time for your instrument. Arrive ten minutes before your scheduled time. If you are unable to audition during one of the posted times for your instrument, please sign up under another instrument listed. If none of the scheduled times work for you, please contact either Dr. Barry Kraus ([barry.kraus@belmont.edu](mailto:barry.kraus@belmont.edu)) or Dr. Robert Gregg ([robert.gregg@belmont.edu](mailto:robert.gregg@belmont.edu)) to schedule an alternate audition time.

**\*Concert Band** enrollment is open to all students on campus. If you wish to play only in Concert Band, you are not required to play a formal audition and do not need to download and prepare the excerpts. Please contact Dr. Barry Kraus via email ([barry.kraus@belmont.edu](mailto:barry.kraus@belmont.edu)) to indicate your interest in performing in the Concert Band, and you may register when you see your advisor. A part-placement audition will take place during the first rehearsal on Monday, August 31 from 3:00-4:20 PM. The placement audition will consist of two major scales and a short sight-reading excerpt.

Following are rehearsal times and course information related to Symphony Orchestra, Wind Ensemble, and Concert Band:

**Symphony Orchestra** (Course Number: MUN 4930)  
Tuesday/Thursday, 5:30-7:00 PM, Belmont Heights Sanctuary

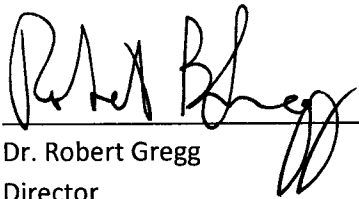
**Wind Ensemble** (Course Number: MUN 4900)  
Tuesday/Thursday, 3:00-5:00 PM, Belmont Heights Sanctuary

**Concert Band** (MUN 3991-02: SpStuEns-Concert Band)  
Monday/Wednesday, 3:00-4:20 PM, Belmont Heights Sanctuary

For 2009-2010, students selected for both Wind Ensemble and Symphony Orchestra may register for either or both courses. We recommend that you alternate your registration between groups each semester so that your transcript reflects your participation in both ensembles. Students selected only for Wind Ensemble or Concert Band must register for the appropriate ensemble.

We look forward to working with you in the fall! If you have any questions, please contact us by phone or email. Enjoy the remainder of your summer!

Sincerely,



Dr. Robert Gregg  
Director  
Symphony Orchestra



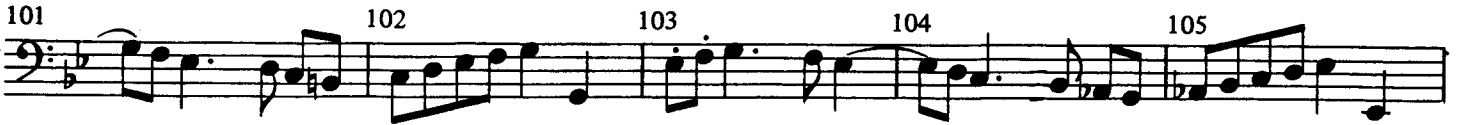
Dr. Barry Kraus  
Director  
Wind Ensemble and Concert Band

# Trombone

$\text{♩} = 88$

## "Marche Hongroise"

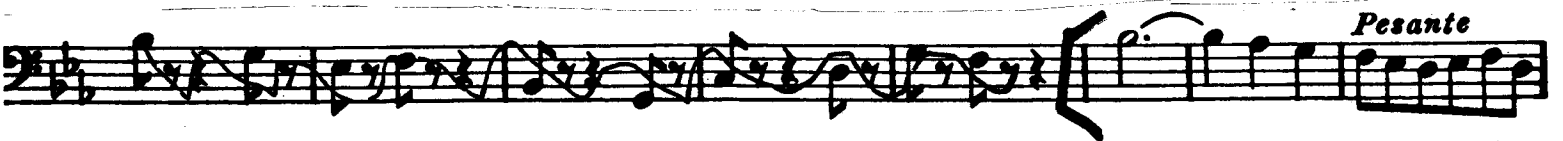
(Berlioz)



$\text{♩} = 88$

## "First Suite in E flat"

(Holst)



# Trombone p. 2

## "Octet"

2

### Trombone I Tenore

(Strawinsky)

Tromb. II

18 Solo cantabile  
con sord.

1

*f* *pp* *fp* *fp* *fp* *sim.*

19

## "Lt. Kijé" (Prokofiev)

calando

22 Tempo I<sup>o</sup>

Ob. I.

23 Appena più mosso

*p* *f*

$\text{♩} = 104$

## "Lt. Kijé"

$\text{♩} = 150$

Solo

*mf*

51

*f*

ri-